



[Join Our Mailing List!](#)

#### Quick Links

[Upcoming Classes](#)

[Special Events](#)



[Become a Member](#)

Official Media Sponsor



The Latest From the Science Factory:

### HAPPY NEW YEAR!

We are closed for New Year's Day on January 1, 2010.

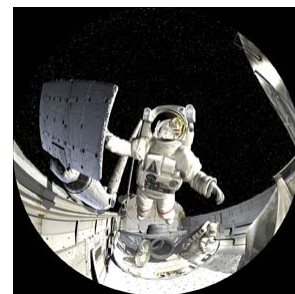
### FROM PLANETARIUM TO EXPLORATION DOME

**12/28/09 - 01/29/10: The Planetarium and its programs are closed for conversion to a full-dome theater. The Planetarium will be closed for upgrade from December 28, 2009 - January 29, 2010.** (Note these **corrected dates** - the December eNews incorrectly reported the closure would continue through January 30, 2010.)

**01/29/10:**

**Members-only Exploration Dome Grand Opening.** Members, come celebrate the Exploration Dome with us on Friday, January 29 from 6:30 PM - 8:00 PM. As we view the full-dome video "Astronaut," we'll experience every challenge space has to throw at "Chad," a test astronaut, from floating around the International Space Station, to maneuvering through microscopic regions of the human body...

**This party's bound to be out of this world!**



**01/30/10: Exploration Dome Shows Open to the Public.**

**Exploration Dome shows will open to the public on January 30, 2010.** (Note these **corrected dates** - the December eNews incorrectly reported that Planetarium shows would resume on February 1, 2010.) Starting January 30, we will be presenting Exploration Dome shows on Friday and Saturday evenings, as well as our Saturday and Sunday shows during the day. Scheduled star shows include **Seasonal Star Gazing: Winter** and **Tonight's Sky**, a live tour of the sky as it will appear in Oregon on the night of the show. In the new Dome, we will be able to present full-dome videos **Astronaut**, and **Legends of the Night Sky: Orion**. Come and find out what it takes to become an astronaut or learn about the myths, stories and legends associated with Orion, the great hunter of the winter sky, in our NEW full-dome theater!



### SPECIAL OPEN DATES

Although we are normally closed on Mondays, the museum will be OPEN on Monday, January 4, 2010 and on Monday, January 18, 2010, both no-school days.

## "EVERY BODY EATS" IN THE EXHIBIT HALL

On January 27th, a new 400 sq. ft. bilingual (Spanish and English) traveling exhibit called "Every Body Eats" debuts! A perfect companion for the continuing "Your Healer Within," "Every Body Eats" is a highly interactive and playful environment that explores diet and nutrition options. Find out what it takes to create a balanced meal, what an appropriate serving looks like, and how much exercise it takes to burn off those French fries. With **"Every Body Eats,"** learning about healthy eating is transformed into a smorgasbord of fun for the whole family!



*EVERY BODY EATS was produced and is toured by the Oregon Museum of Science and Industry. This exhibit was made possible by a Science Education Partnership Award (SEPA) grant from the National Center for Research Resources (NCRR), a component of the National Institutes of Health (NIH).*

## "YOUR HEALER WITHIN" CONTINUES

The Science Factory continues to present **A.T. Still University's Your Healer Within** traveling exhibit, where kids can learn about how their bodies, minds and spiritual outlook can be harnessed to maintain and improve health. The Science Factory would also like to extend an extra special thank you to the major sponsors that brought Your Healer Within to the Eugene / Springfield area.



[See YouTube Footage on the Exhibit](#)  
=>

## Programming and Announcements

### TOT DISCOVERY DAY

FRIDAY, JANUARY 8 from 9 AM to Noon

*(Tot Discovery Days are now presented 9 AM to Noon. Come early and beat the crowds!)*

*Science Factory Members: FREE! Non-members: \$10 per parent/child combo.*

*Additional children \$2 each. Limited to children ages 5 and under ONLY, accompanied by parent or guardian. Tot Discovery Days are sponsored by SELCO Community Credit Union.*



### Planes, Trains, Cars and Cranes

Your little engineer is invited to tinker with the world of machines that move. Toddlers can fly a model glider plane, be the locomotive for a box train, make a painting using toy cars as brushes, and much more!

## SCIENCE PUB AT COSMIC PIZZA

**THURSDAY, JANUARY 14 from 7 to 9 PM**

*For adults. Free.*



### Living in the Quantum World

Atoms, electrons, and photons behave differently than do ordinary objects such as bicycles, tea bags and muffins...Michael Raymer, PhD and Steven van Erik, PhD, professors in University of Oregon's physics department, will explain the strange features of quantum physics by analogy: how would the world appear if ordinary objects behaved in the same way as quantum particles? *Science Pub is sponsored by Life Technologies Foundation, and presented by the Science Factory, University of Oregon College of Arts and Sciences, and OMSI.*

## YES!YEA! DAY No School Day Camps

*For grades 1 - 5. \$40 per session/\$35 for Science Factory or YWA members. Pre-registration required; see descriptions for individual deadlines. \$5 late-registration fee. Sign up for 3 Yes!Yea! Days in 2009-10 for a \$5 discount.*

### YES!YEA! Inventions

**MONDAY, JANUARY 18 from 9 AM - 4 PM**

*Registration deadline: Thursday, January 14.*

Join the Young Writer's Association and the Science Factory as we make and explore inventions, both real and fantastic, through science, art, music and stories.

### YES!YEA! Crime Scene

**FRIDAY, JANUARY 29 from 9 AM - 4 PM**

*Registration deadline: Tuesday, January 26.*

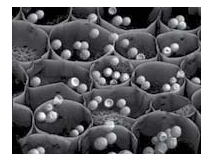
Join the Young Writer's Association and the Science Factory as we explore the world of detectives and CSI investigators through science, art, music and stories.

### Nano Day

**SATURDAY, JANUARY 23 from 11 AM to 3 PM**

*All ages. Drop-in / Free with exhibit hall admission.*

You're never too small to learn about nanotechnology! Find out what scientists are doing with matter at the molecular level and learn how this new technology is beginning to revolutionize our lives, from fighting cancer to sweat-proof socks. Participate in a variety of hands-on activities to explore this exciting, yet tiny, world of scientific discovery.



### Computer Workshop: Photoshop



**SATURDAY, JANUARY 30 from 9 AM to Noon**

*For 10 - 12 year olds. \$18 for Science Factory members / \$25 for non-members.*

*Pre-registration required.* This workshop will introduce kids to the basics of using Photoshop, and how to be creative with digital photos. Participants will learn how to fix problems in a photo, or turn it into a funny image that they could not have produced with their camera alone. Snack will be provided, and each participant will receive a DVD of their Photoshop creations to share with family and friends.

### Thank You, Volunteers!

We would like to thank all the volunteers who **gave the gift of their time** in December:

**Dave Bartling, Britni Cacan, Michael Chase, Linda Ferdowsian, Mike Lobel, and Laura Taggart-Murphy** helped make our Holiday Science Adventures camps a huge success - thank you!

We also thank **Lee Ann Hansen** for her help on a variety of projects throughout the month; **Laura Harrison** for her great work on exhibits and displays this term; and **Leslie Lintner** for her help with our Tot Day program.

And you may have seen **Dave Bartling, Chris Correll, Linda Ferdowsian, or Mike Lobel** helping out in the exhibit hall with hands-on demonstrations, answering questions, and of course unsticking the golf balls....

**Thank you all for helping the Science Factory thrive!**

**Thank You, Donors and Sponsors!**

**We would like to thank the following community members who made a gift to the Science Factory in December:**

Julie Baker, Tom & Patti Barkin, John & Ruth Bascom, Sarah & Tom Bascom, Sasha Chernoff, Dave Clouse, Barbara Cowan & Richard Larson, Russell Donnelly, John Garrett, Glenn & Sue Gordon, Donald Gudehus, Betsy Halpern, Jill Hubbard & William Griffiths, Tom Jefferson, Kathelen Johnson, Thor Jungert, Jerome Lidz & Melinda Grier, Gretchen Miller & Sarah Hendrickson, Karen Murphy & Charlie Tebbutt, Ed & Janice Nachtwey, Beth Naylor & Jim Watson, Tom & Linda Roe, Mark & Lisa Schoening, David Sokoloff, Debra Sullivan, and Saul Wold.

Thanks also to **International Paper Foundation** for a grant in support of summer camps, and the **Co-Op Family Center** for its in-kind donation of toys.

**The following individuals and businesses joined the growing list of supporters of the Exploration Dome campaign:**

Joyce Berman & Dan Carol, The Blanchard Family, Kevin & Ann Burgess, Checkrite Electronics for Seniors, Kristie Gibson & Randall King, Nancy Lee Golden, Hilary Kretchmer & David Fulp, Terrie & J.P. Monroe, Johnnie Mullin, David Sokoloff, Ron & Deb Stock, Elizabeth Wadsworth & Paul Peppis, Carol B. & Tom Williams, Jennifer Wyld & Mark Danburg-Wyld, and 2 Eye Studios.

**Welcome New Members!**

**We look forward to a wonderful year of science fun with:**

Dave and Amy Akana,, Maryann Barber and Billy Drakeford, Josie and Gregory Blackwell, Keven and Jennifer Bowdish, Ken and Sandra Boyst, Shu Fen Chang and Liang Yu Lai, Denise and Neil DeBerry, Vince and Melanie Edmonson, Anna and Paul Ferguson, Kari and Jeff Firth ,Danielle Forney, Robert and Laurie Freeman, Jennifer and Jason Friesen, Rebecca and Paul Gann, Kimberly and Patrick Harrison, Paul and Jana Hazelton, Julie and Chris Hogle, Krystina and Ron Holliday, Andrew and Brittney Huffman, Kim Hughes and T.J. Wright, Kathelen R. Johnson, Ryan and Jenna Kelly, Erin Lane and Ted Greely, Brian Lee and Miriam Rhew, Suzanne Logan and Katrina Jenkins, Jeffrey and Michele Maxwell, Marsha and Ron McDowell, Kelly and Steve Menachemson, Erin and Anita Millard, Michele Mincinski and Ric Vega, Chad and Denise Montgomery, Kathie and Matt Morberg, Wendy and Joel Morgan, Osanna Nowak and Tyler Ish, Jennifer Oberst and Jared Hendricks, Jodi Oxenreider and Chad DePaoli, Thom and Krista Pastor, Michael and Alicia Peacor, Penelope Pilling and Christy Rule, Eric and Kristina Rust, Sara and Brad Senstermacher, Riley and Erin Smith, Gayle and Frank Stroud, Maren Tomblin and Adam Mangrich, Kristal and Jason Tressler, Amy Whaley, Daniel and Jessica Whelan, Kristin and Brian Whelan, Meghan and Aaron Wilson.

We hope you've enjoyed this issue of the Science Factory eNews. If you have thoughts, feedback, questions or just want to say hello, please email us at [sfmarketing@sciencefactory.org](mailto:sfmarketing@sciencefactory.org).

We hope to see you soon!

Science Factory Staff

Science Factory Children's Museum & Planetarium  
Regular Hours: Wednesday-Sunday, 10am-4pm

Phone: 682-7888

[www.sciencefactory.org](http://www.sciencefactory.org)

**[Forward email](#)**

 **SafeUnsubscribe®**

This email was sent to [sfmarketing@sciencefactory.org](mailto:sfmarketing@sciencefactory.org) by [sfmarketing@sciencefactory.org](mailto:sfmarketing@sciencefactory.org).  
[Update Profile/Email Address](#) | Instant removal with [SafeUnsubscribe™](#) | [Privacy Policy](#).

Science Factory Children's Museum & Planetarium | 2300 Leo Harris Parkway | Eugene | OR | 97401